

**Mod. 150 G - 150 A - 150 I**

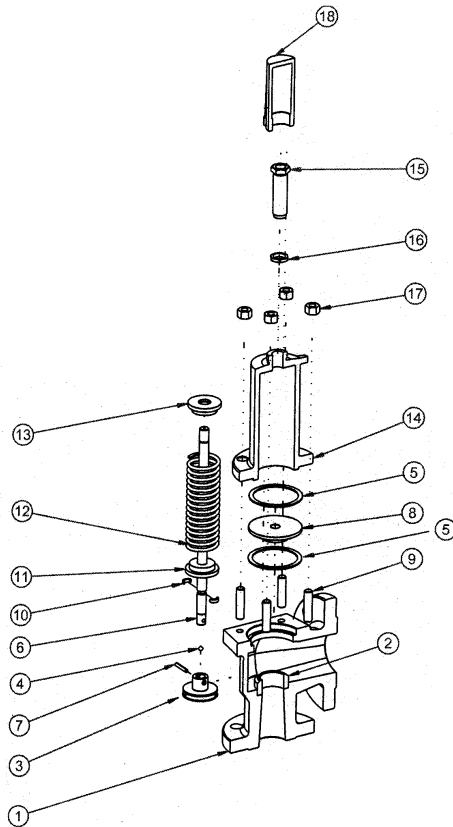


**F. Maietti** S.r.l.

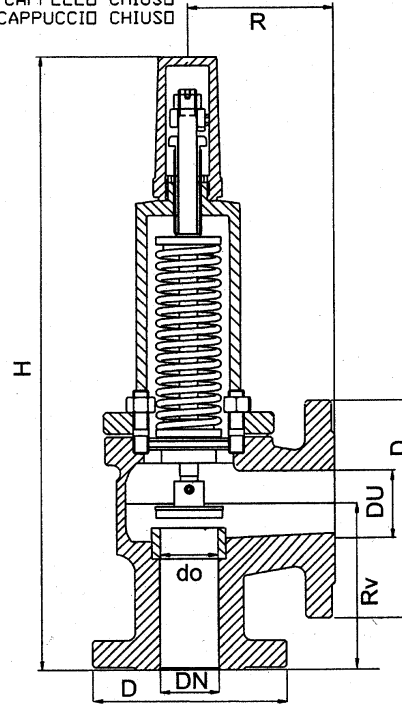
ROBINETTERIE E VALVOME PER IMPIANTI INDUSTRIALI

Via Priv. Salvo d'Acquisto, 16 - 20152 Milano - Tel. 02.47994242 - Fax 02.48910553  
Cod. Fisc. e P. IVA 06631210151 - C.C.I.A.A. 1305645 - Trib. Milano Reg. Soc. 292061

**Valvola di sicurezza a Molla, Flangiata**  
**Spring Safety Valve, Flanged**



MODELLO CON  
CAPPELLO CHIUSO  
CAPPUCCIO CHIUSO



POS.	DESCRIZIONE - DESCRIPTION		MATERIALI - MATERIALS		
			GHISA CAST IRON	ACCIAIO STEEL	ACC. INOX STAINLESS STEEL
			UNI EN 1561 GJL250	ASTM A 216 WCB	ASTM A 351 CF8M
			<b>MOD. 150 G</b>	<b>MOD. 150 A</b>	<b>MOD. 150 I</b>
1	CORPO	BODY	UNI EN 1561 GJL250	ASTM A 216 WCB	ASTM A 351 CF8M
14	CAPPELLO	BONNET	UNI EN 1561 GJL250	ASTM A 216 WCB	ASTM A 351 CF8M
18	CAPPUCCIO	CLOSE FITTING	UNI EN 754-3	UNI EN 754-3	ASTM A 351 CF8M
2	SEDE	SEAT	AISI 304/316	AISI 316	AISI 316
3	OTTURATORE	SHUTTER / DISC	AISI 316	AISI 316	AISI 316
6	ASTA	ROD	AISI 304/316	AISI 304/316	AISI 316
8	PIATTELLO GUIDA	PLATE	OT. 58/Aisi 316	OT. 58/Aisi 316	AISI 316
11	PIATTELLI MOLLA	PLATE FOR SPRING	OT. 58/Aisi 316	OT. 58/Aisi 316	AISI 316
12	MOLLA	SPRING	Acciaio Armonico	Acciaio Armonico	AISI 316 (Max DN.12 mm)

DN/DU	do	Area cm <sup>2</sup>	D 150G	D 150A/I	R/Rv 150 G/A	R/Rv 150 I	H 150 G/A	H 150 I	Peso Kg	Coeff. K	Coeff. K liquidi
15/15	15	1,76		89		70		285	4	0,15	0,10
20/20	20	3,141		105		80		300	4,5	0,15	0,10
25/25	25	4,909	115	115	93	90	335	340	7,5	0,15	0,10
32/32	32	8,04	140	140	96	95	345	345	9	0,15	0,10
40/40	40	12,56	150	150	106	110	360	360	10	0,15	0,10
50/50	50	19,63	165	165	118	120	390	370	14,5	0,15	0,10
65/65	65	33,17	185	185	130	150	500	500	19	0,15	0,10
80/80	80	50,24	200	200	145	160	545	530	25	0,15	0,10
100/100	100	78,50	220	235	175	180	580	565	39	0,15	0,10
125/125	125	122,65	250	270	180	200	640	610	61	0,15	0,10
150/150	150	176,62	285	300	240	235	715	705	78	0,15	0,10